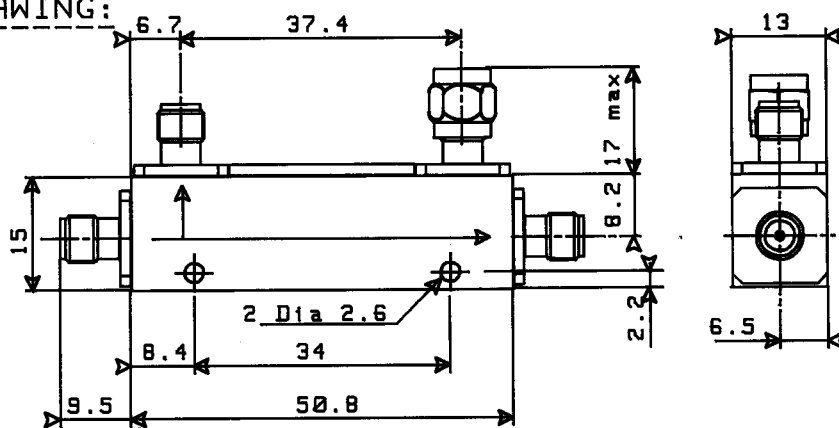




**TITLE** 10 dB 2 - 18 GHz DIRECTIONAL COUPLER

LTR. **C**

DRAWING:



3 SMA/f connectors

General tolerance:  $\pm 0.5$  mm

ELECTRICAL CHARACTERISTICS:

FREQUENCY RANGE	:	2 - 18 GHz
IMPEDANCE	:	50 Ohms
COUPLING (*)	:	10 dB $\pm$ 1 dB
FREQUENCY SENSITIVITY	:	$\pm 0.6$ dB
DIRECTIVITY	2 - 12.4 GHz	: 15 dB
	12.4 - 18 GHz	: 12 dB
INSERTION LOSS	:	1.4 dB
V.S.W.R. MAIN LINE	:	1.35 max.
	COUPLED LINE	: 1.50 max.
AVERAGE POWER	:	20 W CW at 25°C
PEAK POWER	:	3 kW (1 $\mu$ S, 1%.) at 25°C

MECHANICAL CHARACTERISTICS:

CONNECTORS	:	SMA female per MIL C 39012
TERMINATION (on isolated port)	:	50 $\Omega$ 1 W
MAXIMUM WEIGHT	:	50 g

ENVIRONMENTAL CHARACTERISTICS:

OPERATING TEMPERATURE RANGE	:	- 25°C + 85°C
STORAGE TEMPERATURE RANGE	:	- 40°C + 100°C

(\*) Frequency sensitivity is included in coupling.

Tentative data subject to change without notice.

PEN CAT	QUALITY Dpt App. <b>B</b>	MO				
			C	Nominal coupling $\rightarrow$ coupling	12/10/90	K.I.
PAGE 1 1	DATE 09/09/88	NAME K. LUCIEN	B	New format	02/08/90	K.I.
			LTR	<b>REVISIONS</b>	DATE	APP.